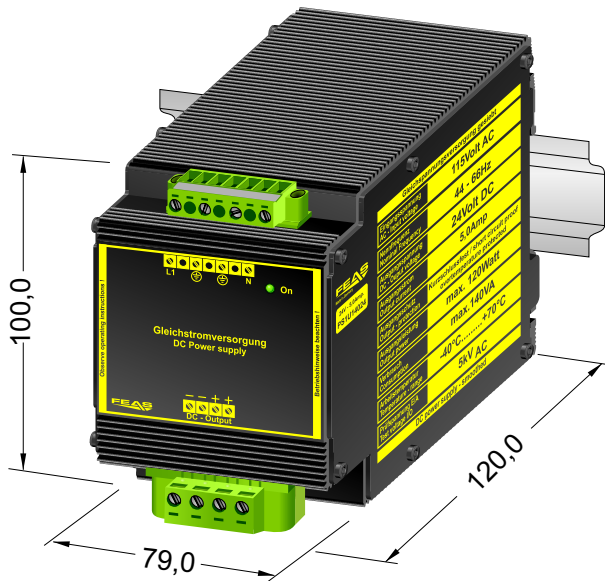


Product specification

Power supply smoothed/screened: PS1U14024



CE - konform

- Input / Output Voltage: 115 V_{AC} / 24 V_{DC}
- Screened / smoothed output voltage
- Parallel to increase power
- Power-on LED
- Suitable for the tropics and vibration
- Encapsulated in resin
- Output potential free according VDE0551
- Conforms to EMC and low voltage directive
- PELV (EN60204), SELV (En60950)
- Safety according to VDE, EN, UL, CSA

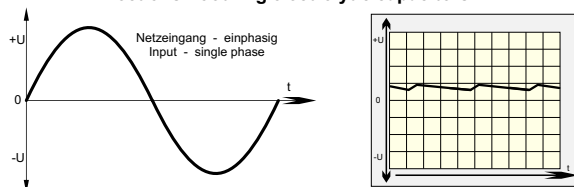
Application

The power supplies series PS1U140 are powerful and robust transformer power supplies to supply electromechanical loads such as relays, solenoid switches, solenoid valves or the like. Also for most SPS applications suitable. The relatively simple circuit structure because of the small components has the advantage of a long life and a relatively high efficiency (>80%). The output voltage is short circuit protected. For loads that require high starting current, this power supply is ideal. Makes its robust design, sealed in a rugged aluminum housing especially designed for use in harsh industrial environments or for example suitable for shipbuilding. In addition, it is insensitive to surges and transients.

Principle

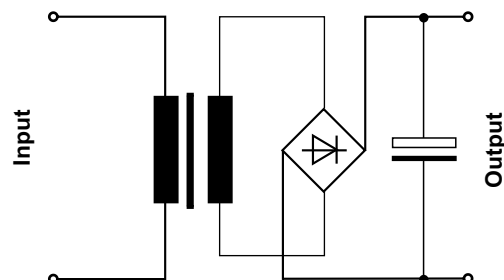
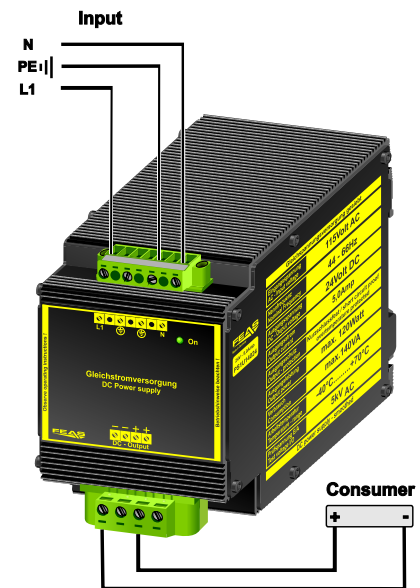
In the smoothed and screened power supplies PS1U140 the network-side AC voltage a 50-Hz transformer is transferred and then rectified by a bridge rectifier. The resulting pulsing DC voltage is smoothed by capacitors and screened. There is no control stage built into this device, so there can be, depending on input voltage, fluctuations and load different sampling fluctuations of the output DC voltage


Effect of smoothing electrolytic capacitors



Execution

Installed and completely sealed in an aluminum housing for direct mounting on the wall or DIN rail.



 Further information
Please refer to the datasheet
or the operating manual!

FEAS

Postfach 1521
D - 22905 Ahrensburg

Phone: 04102 42082
Telefax: 04102 40930

E-Mail : sales@feas.com
Internet: www.feas.com