

# product specification

## DC power supply unregulated: PSLC123

input: 115 / 230Vac - output: 12Vdc / 6.0Amp.



- ☐ Smoothed output voltage
- ☐ Output separated according to VDE0551
- ☐ Extra low safety potential  
PELV (EN 50178) SELV (EN 60950)
- ☐ Parallel connection possible
- ☐ Operating status shown by LED
- ☐ Overload- and open circuit protected  
short circuit proof
- ☐ Simple mounting on rail acc. to DIN 46277  
or wall mounting with screws
- ☐ Vibration proof, suitable for the tropics - epoxy resin casted
- ☐ Conforms to EMC and low voltage directive  $\text{CE}$
- ☐ Safety according to VDE, EN, UL, CSA

### Application

The power supplies of the PSLC3 series are powerful and robust devices to power electrical loads, like contactors, magnetic switches, magnetic valves, relays or something like that. Power supplies of this type are suitable as well for the most PLC-applications.

By using only few components the uncomplex circuit arrangement guarantees the advantage of a long life span and a high degree of efficiency (>80%).

This power supply is optimally suited for loads requiring high starting current. The output voltage is short circuit proof.

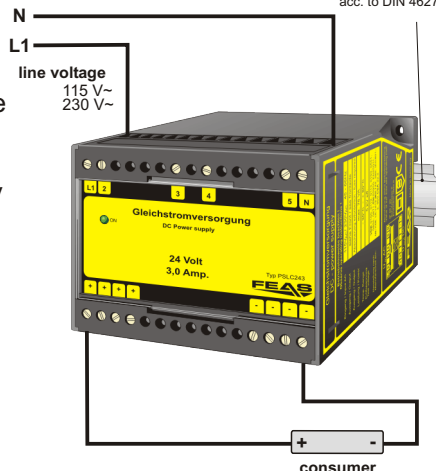
Because of its robust design, casted in a stable plastics housing, it is particularly suitable for being used in rough industrial environment, e.g. in shipbuilding. Furthermore it is quite insensitive to surge voltages.

### Functional principle

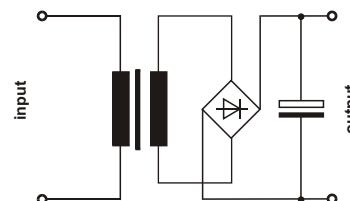
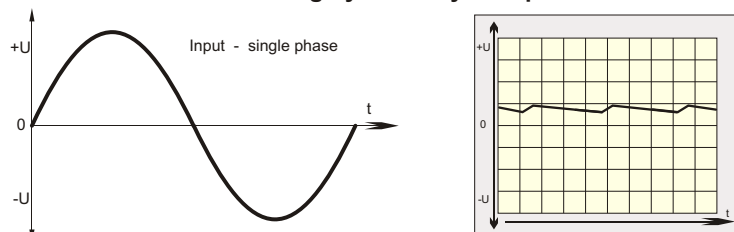
In the unregulated power supply PSLC3 AC voltage is transferred through a 50-Hz transformer. Afterwards the voltage is rectified by a bridge rectifier and the resulting pulsing DC voltage is smoothed with capacitors.

Because this type of power supply has no output voltage stabilization, the output voltage will also float accordingly to the transformation rate, depending on line-voltage fluctuations and consumer load.

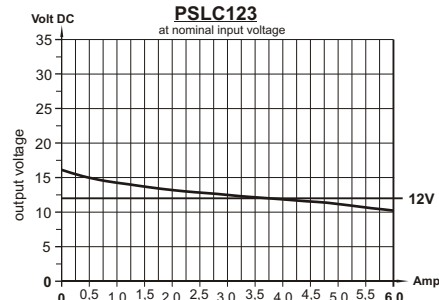
Mounting on a rail:  
suitable for rail  
acc. to DIN 46277



### Effect of smoothing by electrolytic capacitors



load diagram  
PSLC123  
at nominal input voltage



### Design

Completely embedded with resin in a plastics housing for mounting on rail or wall mounting with screws.



Please read the data sheets and  
the user manual  
for further information.



Postfach 1521  
D - 22905 AHRENSBURG

phone: +49 4102 42082 e-mail : info@feas.com  
telefax: +49 4102 40930 internet: www.feas.com