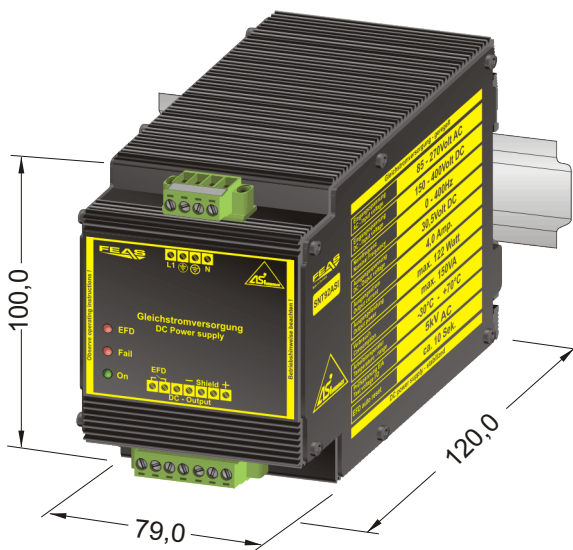


# product specification

## switch-mode power supply: SNT92ASi



- ☐ Switch-mode controller ASi certified
- ☐ regulated output voltage
- ☐ Output separated according to VDE0551
- ☐ Extra low safety potential  
PELV (EN 50178) SELV (EN 60950)
- ☐ Kurzschlussfest, Überlast- und leerlaufsicher
- ☐ Operating status shown by LED
- ☐ Simple mounting on rail acc. to DIN 46277  
or wall mounting with screws
- ☐ vibration proof, suitable for the tropics - epoxy resin casted
- ☐ conforms to EMC and low voltage directive C E
- ☐ Input 85 - 270 V<sub>AC</sub> or 120 - 400 V<sub>DC</sub>
- ☐ Safety acc. to VDE, EN, UL, CSA
- ☐ Earth-Fault-Detection display (EFD)

### Application

The switch-mode power supply SNT92ASi is a powerful and robust device to power sensitive loads in a hard industrial environment.

These features result from the modern construction with a good radio shielding and high reliability integrated in a functional and stable casing.

The short circuit proof output DC voltage is 30.5 V.

This power supply is optimally suited for loads requiring high starting currents

### Functional principle

In the power supply SNT92ASi a flyback converter operates to transform the energy in two steps.

During the conducting phase the diode is blocking, the inductor is energized and a magnetic field establishes. There is no electrical transmission; the consumer load is supplied with energy from the capacitor.

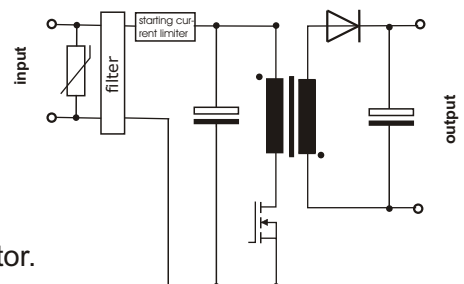
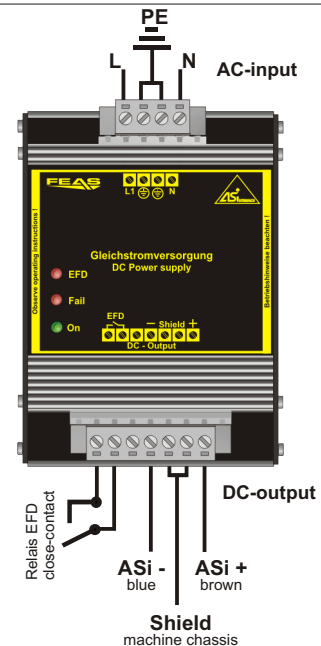
When the switching transistor opens, the blocking phase begins. The current in the inductor cannot change immediately, discharges through the diode and a negative voltage establishes at the inductor.

Now operating like a power source the inductor reloads the capacitor and supplies the consumer with energy.

The energy flows from the inductor into the capacitor and the consumer and through the conducting diode back to the inductor.

### Design

Completely embedded with resin in an aluminium housing for mounting on a rail or wall mounting with screws.



Please read the data sheets and the user manual for further information.